

# *Label IT - Butterfly*

ANTENNA

HEAD

EYE

LEG

HINDWING

THORAX

ABDOMEN

FOREWING

## A butterfly has:

2 Eyes

2 Antenna

6 Legs

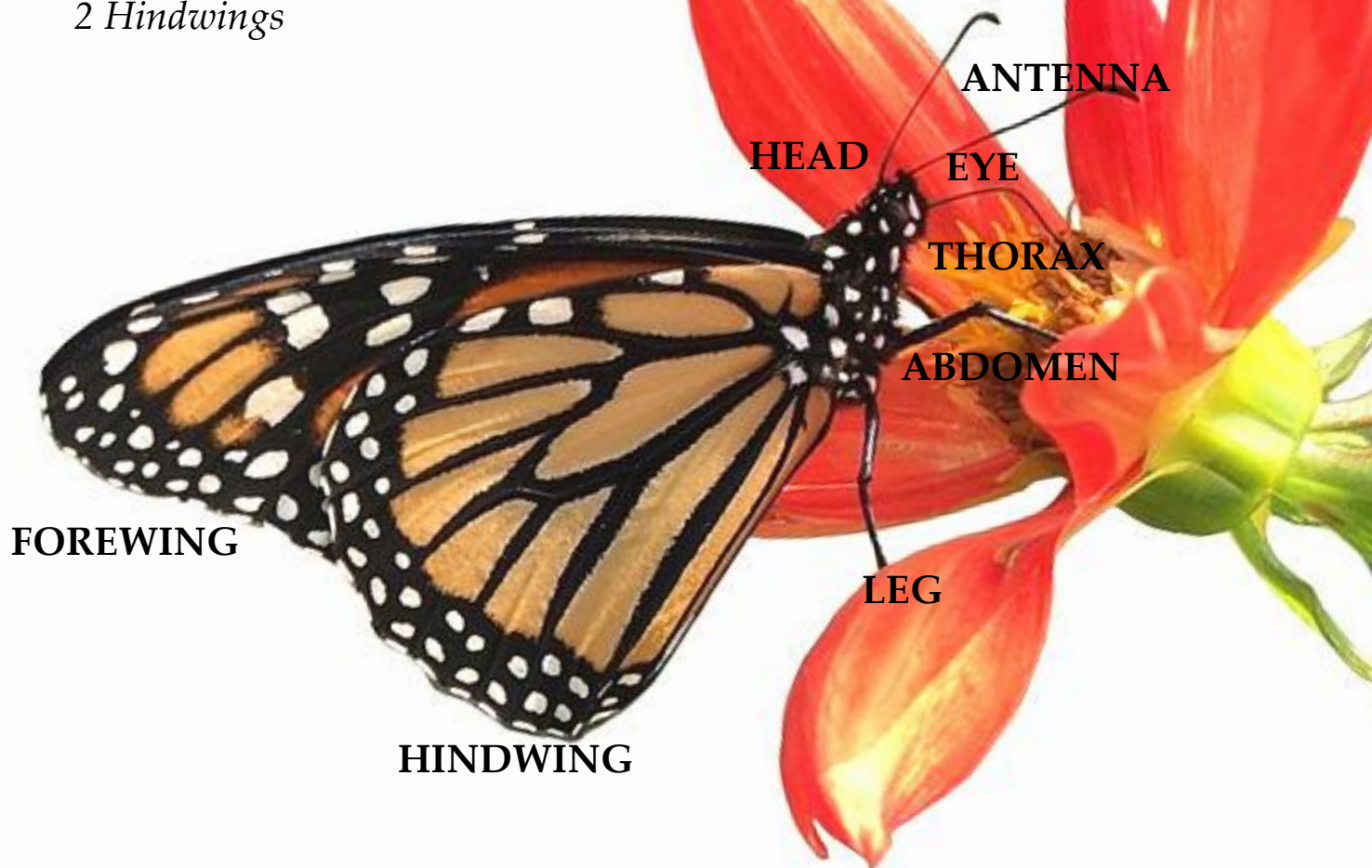
*4 Long legs*

*2 Short Legs*

4 Wings

*2 Forewings*

*2 Hindwings*



ANTENNA

HEAD

EYE

THORAX

ABDOMEN

LEG

FOREWING

HINDWING

